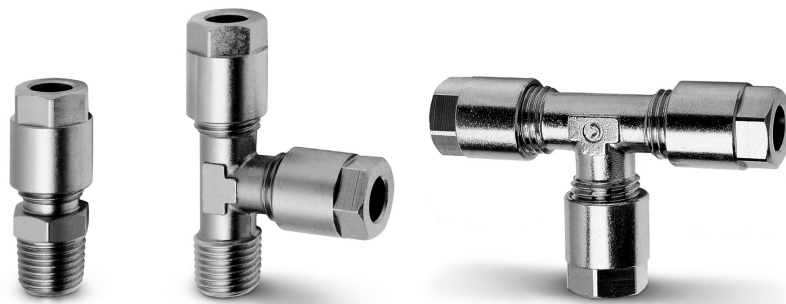


Series 1000 brass universal nose fittings

Nose fittings for plastic, copper and brass tubes: \varnothing 4, 6, 8, 10, 12 mm
Fittings threads: BSP (G1/8, G1/4), BSPT (R1/8, R1/4, R3/8, R1/2)



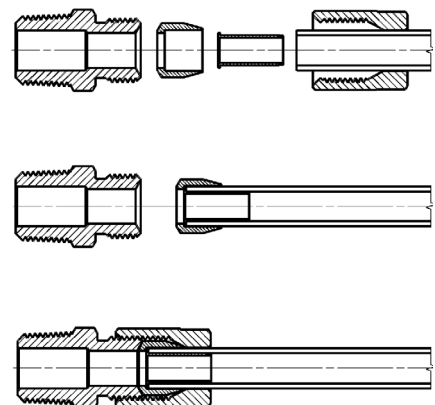
Series 1000 nose fittings are used with plastic tubes as well as with copper, brass, steel and aluminium tubes. These fittings, which are suitable for several applications, can be used within pneumatic, oil-pressure and low-pressure hydraulic circuits.

The fittings seats, noses and nuts comply with the DIN 3870-3861 standards.

GENERAL DATA

| | |
|-------------------------|----------------------------------------------------------|
| Diameters | \varnothing 4 - 6 - 8 - 10 - 12 mm |
| Threads | GAS, conical ISO 7 (BSPT) GAS, cylindrical ISO 228 (BSP) |
| Temperature | see data for tubing used |
| Connecting tube | annealed copper and plastic tubes (with reinforcement) |
| Medium | compressed air and other low pressure fluids |
| Materials | nickel-plated brass |
| Working pressure | max 40 bar |

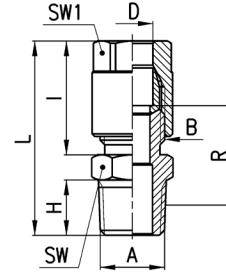
Fittings with connecting tube



Fittings Mod. 1050



BSPT Male Connector

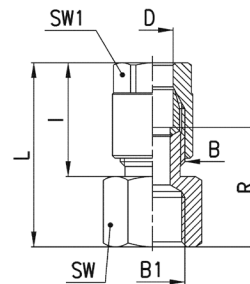


| DIMENSIONS | | | | | | | | | | |
|-------------|----|------|---------|------|------|------|------|----|-----|------------|
| Mod. | D | A | B | H | I | L | R | SW | SW1 | Weight (g) |
| 1050 4-1/8 | 4 | R1/8 | 1/8 | 7,5 | 19 | 31 | 14 | 12 | 12 | 19 |
| 1050 6-1/8 | 6 | R1/8 | 1/8 | 7,5 | 19 | 31 | 14 | 12 | 12 | 18 |
| 1050 6-1/4 | 6 | R1/4 | 1/8 | 11 | 19 | 35 | 16,5 | 14 | 12 | 23 |
| 1050 8-1/8 | 8 | R1/8 | 1/4 | 7,5 | 23 | 35 | 15,5 | 14 | 14 | 29 |
| 1050 8-1/4 | 8 | R1/4 | 1/4 | 11 | 23 | 39 | 18 | 14 | 14 | 33 |
| 1050 8-3/8 | 8 | R3/8 | 1/4 | 11,5 | 23 | 39,5 | 18 | 17 | 14 | 40 |
| 1050 10-1/4 | 10 | R1/4 | 3/8 | 11 | 25,5 | 41,5 | 18 | 17 | 17 | 51 |
| 1050 10-3/8 | 10 | R3/8 | 3/8 | 11,5 | 25,5 | 42 | 18 | 17 | 17 | 55 |
| 1050 10-1/2 | 10 | R1/2 | 3/8 | 14 | 25,5 | 45 | 18 | 22 | 17 | 65 |
| 1050 12-1/4 | 12 | R1/4 | M18x1,5 | 11 | 24,5 | 40,5 | 12 | 19 | 19 | 56 |
| 1050 12-3/8 | 12 | R3/8 | M18x1,5 | 11,5 | 24,5 | 41 | 12 | 19 | 19 | 58 |
| 1050 12-1/2 | 12 | R1/2 | M18x1,5 | 14 | 24,5 | 44 | 12 | 22 | 19 | 68 |

* = with bi-conical olive

Fittings Mod. 1063

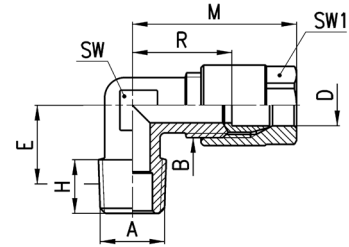
BSP Female Connector



| DIMENSIONS | | | | | | | | | | |
|------------|---|------|-----|----|------|------|----|-----|------------|--|
| Mod. | D | B1 | B | I | L | R | SW | SW1 | Weight (g) | |
| 1063 4-1/8 | 4 | G1/8 | 1/8 | 19 | 29 | 18,5 | 13 | 12 | 19 | |
| 1063 6-1/8 | 6 | G1/8 | 1/8 | 19 | 29 | 18,5 | 13 | 12 | 18 | |
| 1063 6-1/4 | 6 | G1/4 | 1/8 | 19 | 30,5 | 20 | 17 | 12 | 25 | |
| 1063 8-1/8 | 8 | G1/8 | 1/4 | 23 | 33 | 20 | 14 | 14 | 31 | |
| 1063 8-1/4 | 8 | G1/4 | 1/4 | 23 | 34,5 | 21,5 | 17 | 14 | 35 | |

Fittings Mod. 1020

BSPT Fix Male Elbow

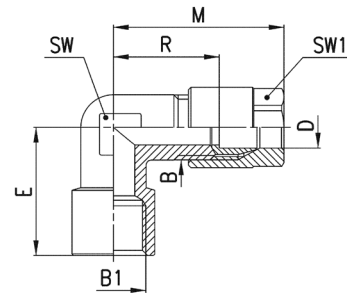


| DIMENSIONS | | | | | | | | | | | |
|-------------|----|------|---------|------|------|------|------|----|-----|------------|---|
| Mod. | D | A | B | E | H | M | R | SW | SW1 | Weight (g) | |
| 1020 4-1/8 | 4 | R1/8 | 1/8 | 11,5 | 7,5 | 29,5 | 19 | 9 | 12 | 21 | |
| 1020 6-1/8 | 6 | R1/8 | 1/8 | 11,5 | 7,5 | 29,5 | 19 | 9 | 12 | 19 | |
| 1020 6-1/4 | 6 | R1/4 | 1/8 | 13,5 | 11 | 29,5 | 19 | 12 | 12 | 27 | |
| 1020 8-1/8 | 8 | R1/8 | 1/4 | 11,5 | 7,5 | 33 | 20 | 11 | 14 | 35 | |
| 1020 8-1/4 | 8 | R1/4 | 1/4 | 13,5 | 11 | 33 | 20 | 12 | 14 | 36 | |
| 1020 8-3/8 | 8 | R3/8 | 1/4 | 15,5 | 11,5 | 35 | 22 | 14 | 14 | 50 | |
| 1020 10-1/4 | 10 | R1/4 | 3/8 | 15 | 11 | 38 | 22,5 | 13 | 17 | 59 | |
| 1020 10-3/8 | 10 | R3/8 | 3/8 | 15,5 | 11,5 | 38 | 22,5 | 14 | 17 | 58 | |
| 1020 10-1/2 | 10 | R1/2 | 3/8 | 16 | 14 | 38 | 22,5 | 16 | 17 | 78 | |
| 1020 12-1/4 | 12 | R1/4 | M18x1,5 | 15 | 11 | 37 | 16,5 | 15 | 19 | 66 | * |
| 1020 12-3/8 | 12 | R3/8 | M18x1,5 | 15 | 11,5 | 37 | 16,5 | 15 | 19 | 66 | * |
| 1020 12-1/2 | 12 | R1/2 | M18x1,5 | 16 | 14 | 37 | 16,5 | 16 | 19 | 75 | * |

* = with bi-conical olive

Fittings Mod. 1093

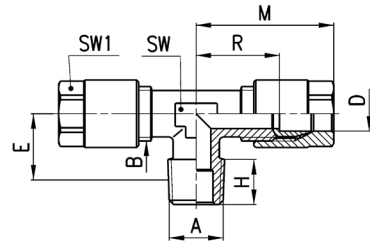
BSP Female Elbow



| DIMENSIONS | | | | | | | | | | |
|------------|---|------|-----|----|------|------|----|-----|------------|--|
| Mod. | D | B1 | B | E | M | R | SW | SW1 | Weight (g) | |
| 1093 4-1/8 | 4 | G1/8 | 1/8 | 19 | 29,5 | 18,5 | 12 | 12 | 31 | |
| 1093 6-1/8 | 6 | G1/8 | 1/8 | 19 | 29,5 | 19 | 12 | 12 | 25 | |
| 1093 6-1/4 | 6 | G1/4 | 1/8 | 23 | 30,5 | 20 | 13 | 12 | 39 | |
| 1093 8-1/8 | 8 | G1/8 | 1/4 | 19 | 33 | 20 | 11 | 14 | 39 | |
| 1093 8-1/4 | 8 | G1/4 | 1/4 | 23 | 35 | 22 | 13 | 14 | 44 | |

Fittings Mod. 1000

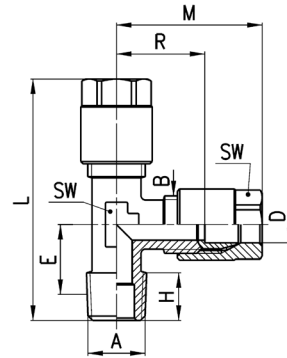
BSPT Fix Male Tee



| DIMENSIONS | | | | | | | | | | |
|-------------|----|------|-----|------|-----|------|------|----|-----|------------|
| Mod. | D | A | B | E | H | M | R | SW | SW1 | Weight (g) |
| 1000 4-1/8 | 4 | R1/8 | 1/8 | 11,5 | 7,5 | 29,5 | 19 | 9 | 12 | 35 |
| 1000 6-1/8 | 6 | R1/8 | 1/8 | 11,5 | 7,5 | 29,5 | 19 | 9 | 12 | 33 |
| 1000 8-1/4 | 8 | R1/4 | 1/4 | 13,5 | 11 | 33 | 20 | 12 | 14 | 63 |
| 1000 10-1/4 | 10 | R1/4 | 3/8 | 15 | 11 | 38 | 22,5 | 13 | 17 | 104 |

Fittings Mod. 1010

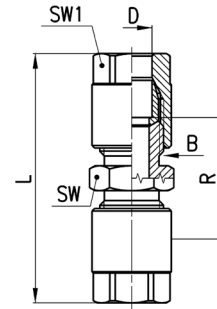
Lateral BSPT Fix Male Tee



| DIMENSIONS | | | | | | | | | | | |
|-------------|----|------|-----|------|-----|------|------|------|----|-----|------------|
| Mod. | D | A | B | E | H | L | M | R | SW | SW1 | Weight (g) |
| 1010 4-1/8 | 4 | R1/8 | 1/8 | 11,5 | 7,5 | 48 | 29,5 | 19 | 9 | 12 | 37 |
| 1010 6-1/8 | 6 | R1/8 | 1/8 | 11,5 | 7,5 | 48 | 29,5 | 19 | 9 | 12 | 33 |
| 1010 8-1/4 | 8 | R1/4 | 1/4 | 13,5 | 11 | 54,5 | 33 | 20 | 12 | 14 | 61 |
| 1010 10-1/4 | 10 | R1/4 | 3/8 | 15 | 11 | 61,5 | 38 | 22,5 | 13 | 17 | 103 |

Fittings Mod. 1230

Union Connector

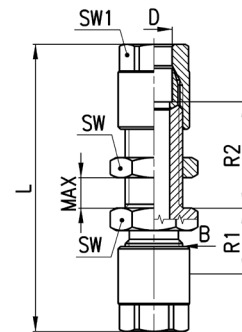


| DIMENSIONS | | | | | | | |
|------------|----|---------|------|------|----|-----|------------|
| Mod. | D | B | L | R | SW | SW1 | Weight (g) |
| 1230 4 | 4 | 1/8 | 42,5 | 21,5 | 12 | 12 | 29 |
| 1230 6 | 6 | 1/8 | 42,5 | 21,5 | 12 | 12 | 26 |
| 1230 8 | 8 | 1/4 | 51 | 25 | 14 | 14 | 48 |
| 1230 10 | 10 | 3/8 | 56 | 25 | 17 | 17 | 83 |
| 1230 12 | 12 | M18x1,5 | 54 | 13 | 19 | 19 | 140 |

* = with bi-conical olive

Fittings Mod. 1250

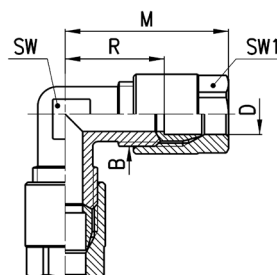
Bulkhead Connector



| DIMENSIONS | | | | | | | | | |
|------------|----|-----|------|------|------|-----|----|-----|------------|
| Mod. | D | B | L | R1 | R2 | MAX | SW | SW1 | Weight (g) |
| 1250 4 | 4 | 1/8 | 57,5 | 12,5 | 23 | 12 | 14 | 12 | 40 |
| 1250 6 | 6 | 1/8 | 57,5 | 13 | 23,5 | 12 | 14 | 12 | 38 |
| 1250 8 | 8 | 1/4 | 65 | 15 | 24 | 13 | 17 | 14 | 67 |
| 1250 10 | 10 | 3/8 | 72,5 | 15 | 26,5 | 13 | 22 | 17 | 119 |

Fittings Mod. 1220

Elbow Connector

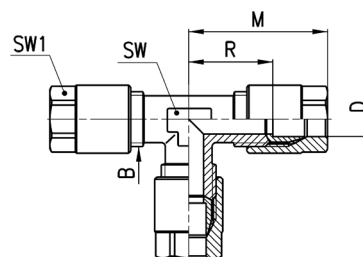


| DIMENSIONS | | | | | | | |
|------------|----|---------|------|------|----|-----|------------|
| Mod. | D | B | M | R | SW | SW1 | Weight (g) |
| 1220 4 | 4 | 1/8 | 29,5 | 19 | 9 | 12 | 31 |
| 1220 6 | 6 | 1/8 | 29,5 | 19 | 9 | 12 | 29 |
| 1220 8 | 8 | 1/4 | 33 | 20 | 11 | 14 | 53 |
| 1220 10 | 10 | 3/8 | 38 | 22,5 | 14 | 17 | 92 |
| 1220 12 | 12 | M18x1,5 | 37 | 16,5 | 16 | 19 | 99 * |

* = with bi-conical olive

Fittings Mod. 1210

Tee Connector

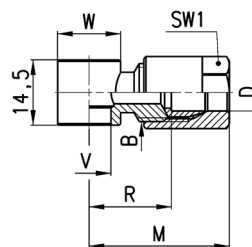


| DIMENSIONS | | | | | | | |
|------------|----|---------|------|------|----|-----|------------|
| Mod. | D | B | M | R | SW | SW1 | Weight (g) |
| 1210 4 | 4 | 1/8 | 29,5 | 19 | 9 | 12 | 45 |
| 1210 6 | 6 | 1/8 | 29,5 | 19 | 9 | 12 | 42 |
| 1210 8 | 8 | 1/4 | 33 | 20 | 12 | 14 | 79 |
| 1210 10 | 10 | 3/8 | 38 | 22,5 | 13 | 17 | 133 |
| 1210 12 | 12 | M18x1,5 | 37 | 16,5 | 16 | 19 | 144 * |

* = with bi-conical olive

Fittings Mod. 1170

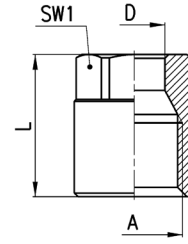
Single Banjo



| DIMENSIONS | | | | | | | | | | |
|------------|---|-----|------|------|------|----|-----|------------|------------------------------|--|
| Mod. | D | B | R | M | V | W | SW1 | Weight (g) | assembled with Mod. | |
| 1170 6-1/8 | 6 | 1/8 | 17.5 | 28 | 9.8 | 14 | 12 | 20 | 1631, 1635, SCU, SVU, SCO... | |
| 1170 6-1/4 | 6 | 1/8 | 20 | 30.5 | 13.2 | 18 | 12 | 24 | 1631, 1635, SCU, SVU, SCO... | |
| 1170 8-1/8 | 8 | 1/4 | 18 | 31 | 9.8 | 14 | 14 | 31 | 1635, SCU, SVU, SCO... | |

Accessories Mod. 1303

Blocking nut



| DIMENSIONS | | | | | |
|-----------------|----|---------|------|-----|------------|
| Mod. | D | A | L | SW1 | Weight (g) |
| 1303 4-1/8 | 4 | 1/8 | 15,5 | 12 | 8 |
| 1303 6-1/8 | 6 | 1/8 | 15,5 | 12 | 8 |
| 1303 8-1/4 | 8 | 1/4 | 19 | 14 | 14 |
| 1303 10-3/8 | 10 | 3/8 | 21,5 | 17 | 24 |
| 1303 12-M18x1,5 | 12 | M18x1,5 | 19,5 | 19 | 27 |

Accessories Mod. 1310

Olive and Bicone

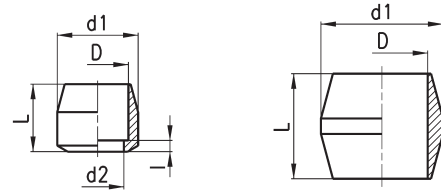


FIG. 1

FIG. 2

| DIMENSIONS | | | | | | |
|-------------|----|------|-----|-----|------|------------|
| Mod. | D | d1 | d2 | l | L | Weight (g) |
| 1310 4 | 4 | 7,8 | 3 | 1 | 8 | 2 |
| 1310 6 | 6 | 7,8 | 4,5 | 1 | 7 | 1 |
| 1310 8 | 8 | 10,8 | 7 | 1,5 | 9 | 3 |
| 1310 10 | 10 | 13,8 | 9 | 1,5 | 11,5 | 5 |
| 1310 12-M18 | 12 | 16,3 | 12 | - | 11 | 6 * |

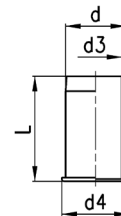
Fig. 1 = olive

Fig. 2 = bi-conical olive

* = with bi-conical olive

Accessories Mod. 1320

Inserts



| DIMENSIONS | | | | | |
|------------|----|----|----|----|------------|
| Mod. | d | d3 | d4 | L | Weight (g) |
| 1320 4 | 4 | 3 | 5 | 12 | 1 |
| 1320 6 | 6 | 5 | 7 | 13 | 1 |
| 1320 8 | 8 | 7 | 9 | 14 | 1 |
| 1320 10 | 10 | 9 | 11 | 16 | 2 |